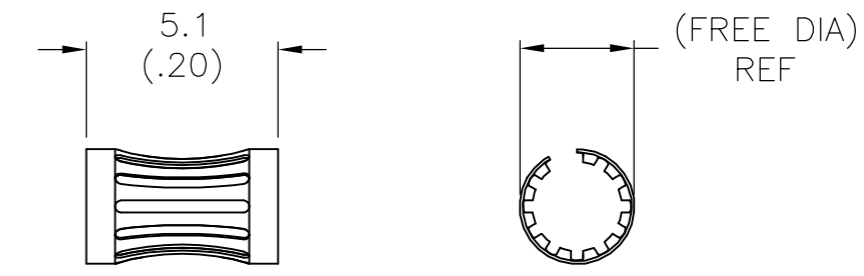
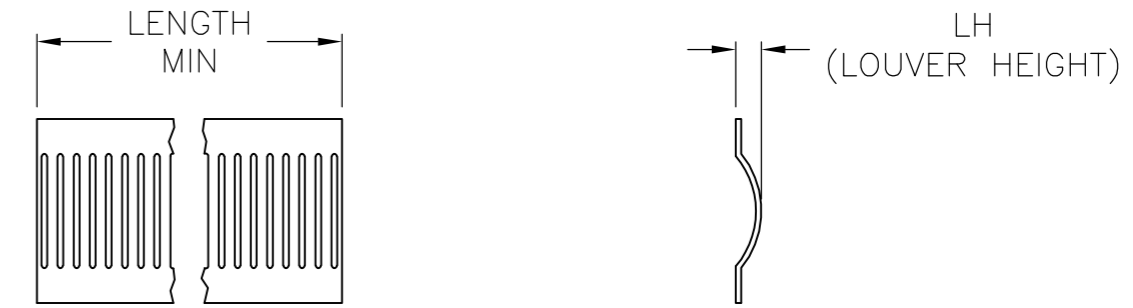


THIS DRAWING IS UNPUBLISHED. RELEASED FOR PUBLICATION  
 © COPYRIGHT BY TYCO ELECTRONICS CORPORATION. ALL RIGHTS RESERVED.

LOC		DIST		REVISIONS					
FT		0		P	LTR	DESCRIPTION	DATE	DWN	APVD
				T1		REVISED PER ECO-07-016448	7/16/07	SS	GS



STYLE A  
(FEMALE)



STYLE C  
(STRIP)

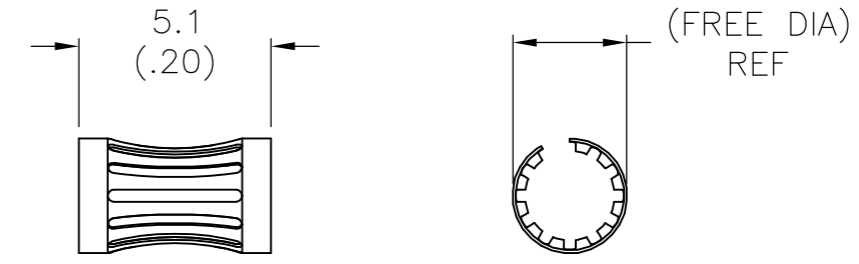
A	[.83]	[.022]	--	12	19	[.750]	3-2	82	0.12	[.005]	05043	5-192046-0	
A	[.83]	[.022]	--	12	19	[.750]	UNPL	82	0.12	[.005]	05115	4-192046-9	
A	[.76]	[.022]	--	12	16.8	[.660]	UNPL	75	0.12	[.005]	05141	4-192046-8	
A	[.73]	[.016]	--	13	15.9	[.625]	3-2	71	0.12	[.005]	05175	4-192046-7	
A	[.73]	[.018]	--	12	15.9	[.625]	4-2	71	0.12	[.005]	05174	4-192046-6	OBSOLETE
A	[.73]	[.022]	--	12	15.3	[.602]	3-2	67	0.12	[.005]	05049	4-192046-5	
A	[.73]	[.022]	--	12	15.2	[.600]	UNPL	67	0.12	[.005]	05065	4-192046-4	
A	[.73]	[.018]	--	12	14.8	[.584]	3-2	65	0.15	[.006]	05022	4-192046-3	
A	[.70]	[.018]	--	12	13	[.514]	UNPL	58	0.12	[.005]	05102	4-192046-2	
A	[.57]	--	--	12	12.7	[.500]	1-2	57	0.20	[.008]	05182	4-192046-1	OBSOLETE
A	[.68]	[.016]	--	13	12.7	[.500]	UNPL	57	0.12	[.005]	05176	4-192046-0	
A	[.68]	[.018]	--	12	12.7	[.500]	1-2	57	0.12	[.005]	05143	3-192046-9	OBSOLETE
SUPERSEDED BY 193670-7											05184	3-192046-8	
A	[.68]	[.018]	--	12	12.7	[.499]	4-2	56	0.15	[.006]	05144	3-192046-7	
A	[.64]	[.022]	--	14	12.4	[.490]	1-2	56	0.12	[.005]	05135	3-192046-6	
A	[.64]	[.022]	--	14	12.4	[.490]	UNPL	56	0.12	[.005]	05138	3-192046-5	
--	[.64]	[.022]	--	14	12.4	[.490]	1-2	56	0.10	[.004]	05148	3-192046-4	
A	[.64]	[.022]	--	14	12.4	[.490]	UNPL	56	0.10	[.004]	05151	3-192046-3	
--	[.55]	[.018]	--	12	12.3	[.486]	UNPL	56	0.12	[.005]	05099	3-192046-2	
A	[.50]	[.022]	--	13	11.6	[.458]	UNPL	51	0.12	[.005]	05145	3-192046-1	
A	[.44]	[.022]	--	12	10.2	[.400]	3-2	44	0.12	[.005]	05029	3-192046-0	
A	[.44]	[.022]	--	12	10.2	[.400]	UNPL	44	0.12	[.005]	05066	2-192046-9	
A	[.42]	[.018]	--	12	9.5	[.375]	3-2	42	0.15	[.006]	05019	2-192046-8	OBSOLETE
A	--	--	--	12	9.5	[.375]	UNPL	42	0.15	[.006]	05032	2-192046-7	
A	[.42]	--	--	13	9.5	[.375]	1-2	42	0.12	[.005]	05137	2-192046-6	OBSOLETE
A	[.38]	--	--	12	7.9	[.312]	6	36	0.15	[.006]	05133	2-192046-5	OBSOLETE
A	[.38]	--	--	12	7.9	[.312]	3-2	36	0.15	[.006]	05120	2-192046-4	OBSOLETE
A	[.34]	--	--	12	7.5	[.297]	3-2	34	0.15	[.006]	05122	2-192046-3	OBSOLETE
SUPERSEDED BY 193771-1											--	2-192046-2	
A	[.32]	[.018]	--	12	6.9	[.270]	1-2	31	0.12	[.005]	05077	2-192046-1	
A	[.33]	[.018]	--	12	6.3	[.250]	6	28	0.15	[.006]	05040	2-192046-0	
A	[.33]	[.018]	--	12	6.3	[.250]	3-2	28	0.15	[.006]	05064	1-192046-9	
SUPERSEDED BY 9-192046-4											05054	1-192046-8	
A	[.33]	[.018]	--	12	6.3	[.250]	UNPL	28	0.15	[.006]	05038	1-192046-7	
A	[.27]	[.018]	--	12	5.7	[.225]	4-2	25	0.15	[.006]	05051	1-192046-6	
A	[.27]	[.018]	--	12	5.7	[.225]	1-2	25	0.15	[.006]	05163	1-192046-5	
A	[.27]	[.018]	--	12	5.7	[.225]	UNPL	25	0.15	[.006]	05046	1-192046-4	
A	[.34]	[.022]	--	14	5.1	[.200]	3-2	24	0.12	[.005]	05157	1-192046-3	
A	[.34]	[.022]	--	14	5.1	[.200]	UNPL	24	0.12	[.005]	05156	1-192046-2	
A	[.24]	[.018]	--	12	5	[.197]	1-2	22	0.15	[.006]	05147	1-192046-1	
A	[.24]	[.018]	--	12	5	[.197]	UNPL	22	0.15	[.006]	05146	1-192046-0	
A	[.23]	[.018]	--	12	4.7	[.187]	3-2	21	0.15	[.006]	05050	192046-9	
A	[.23]	[.018]	--	12	4.7	[.187]	1-2	21	0.15	[.006]	05103	192046-8	
A	[.23]	[.022]	--	12	4.7	[.187]	3-2	21	0.12	[.005]	05016	192046-7	OBSOLETE
A	[.22]	[.018]	--	12	4.4	[.172]	3-2	20	0.15	[.006]	05015	192046-6	
A	[.22]	[.018]	--	12	4.4	[.172]	1-2	20	0.15	[.006]	05162	192046-5	
A	[.22]	[.018]	--	12	4.4	[.172]	UNPL	20	0.15	[.006]	05155	192046-4	
A	[.19]	[.018]	--	12	4.1	[.160]	5-2	18	0.10	[.004]	05114	192046-3	
A	[.19]	[.018]	--	12	4.1	[.160]	UNPL	18	0.10	[.004]	05113	192046-2	
A	[.19]	[.018]	--	12	4	[.157]	4-2	18	0.15	[.006]	05134	192046-1	

1. FINISH: SILVER PLATE 200 uIN THICK MIN.
2. FINISH: NICKEL PLATE 40 uIN THICK MIN.
3. FINISH: GOLD PLATE 10 uIN THICK MIN.
4. FINISH: GOLD PLATE 50 uIN THICK MIN.
5. FINISH: GOLD PLATE 20 uIN THICK MIN.
6. FINISH: TIN PLATE 300 uIN THICK MIN.
7. -
8. FINISH: GOLD PLATE 30 uIN THICK MIN.
9. -
10. -
11. PLATING NOTES ARE TO BE INTERPRETED AS FOLLOWS 6-8 AS 6 OVER 8.
12. MATERIAL: CDA17200, BeCu.
13. MATERIAL: STAINLESS STEEL
14. MATERIAL: CDA17410, BeCu.
15. FINISH: HARD GOLD OVER NICKEL PLATE.

THIS DRAWING IS A CONTROLLED DOCUMENT.		DWN	-	Tyco Electronics Corporation Harrisburg, PA 17105-3608	
DIMENSIONS: mm		CHK	J.TURNER	08-04-93	NAME
TOLERANCES UNLESS OTHERWISE SPECIFIED:		APVD	-	PRODUCT SPEC	CONTACT BAND,FEMALE
0 PLC ± -		APPLICATION SPEC	-	SIZE	A2
1 PLC ± -		WEIGHT	-	CAGE CODE	00779
2 PLC ± 0.5 [.02]		RESTRICTED TO	-	DRAWING NO	C=192046
3 PLC ± 0.25 [.010]		SCALE	1:1	SHEET	1 of 2
4 PLC ± -		REV	T1		
ANGLES ± -		CUSTOMER DRAWING			
FINISH					

THIS DRAWING IS UNPUBLISHED. RELEASED FOR PUBLICATION  
 © COPYRIGHT BY TYCO ELECTRONICS CORPORATION. ALL RIGHTS RESERVED.

LOC	DIST	REVISIONS					
FT	0	P	LTR	DESCRIPTION	DATE	DWN	APVD
				SEE SHEET 1			



STYLE A  
(FEMALE)



STYLE C  
(STRIP)

A	[.34]	[.022]	--	12	5.1 [.200]	3-2	24	0.12 [.005]	--	9-192046-9
A	[.19]	[.022]	--	12	3.4 [.134]	UNPL	15	0.15 [.006]	--	9-192046-8
A	[.19]	[.022]	--	12	3.4 [.134]	8-2	16	0.15 [.006]	--	9-192046-7
A	[.19]	[.022]	--	12	3.4 [.134]	8-2	16	0.15 [.006]	--	9-192046-6
A	[.19]	[.022]	--	12	3.4 [.134]	UNPL	15	0.15 [.006]	--	9-192046-5
A	[.35]	[.018]	--	12	6 [.236]	1-2	27	0.15 [.006]	--	9-192046-4
A	[.45]	[.018]	--	12	9 [.354]	1-2	40	0.15 [.006]	--	9-192046-3
A	[.19]	[.018]	--	12	3.17 [.125]	1-2	15	0.15 [.006]	--	9-192046-2
A	[.12]	[.018]	--	12	1.9 [.075]	15	10	0.08 [.003]	--	9-192046-1
A	[.12]	[.018]	--	12	1.9 [.075]	UNPL	10	0.08 [.003]	--	9-192046-0
A	[.32]	[.022]	--	12	5.7 [.225]	UNPL	25	0.15 [.006]	--	8-192046-9
A	[.21]	[.022]	--	12	5.4 [.211]	UNPL	19	0.12 [.005]	--	8-192046-8
A	[1.66]	[.022]	--	12	38.1 [1.500]	UNPL	168	0.15 [.006]	--	8-192046-7
A	[1.10]	[.018]	--	12	23.7 [.934]	UNPL	105	0.12 [.005]	--	8-192046-6
A	[.73]	[.016]	--	13	15.9 [.625]	UNPL	71	0.12 [.005]	--	8-192046-5
A	[.73]	[.018]	--	12	15.9 [.625]	UNPL	71	0.12 [.005]	--	8-192046-4
A	[.73]	[.018]	--	12	14.8 [.584]	UNPL	65	0.15 [.006]	--	8-192046-3
A	[.68]	[.018]	--	12	12.7 [.500]	UNPL	57	0.12 [.005]	--	8-192046-2
A	[.68]	[.018]	--	12	12.7 [.500]	UNPL	56	0.15 [.006]	--	8-192046-1
--	--	--	--	--	--	--	--	--	--	8-192046-0
A	[.32]	[.018]	--	12	6.9 [.270]	UNPL	31	0.12 [.005]	--	7-192046-9
A	[.23]	[.018]	--	12	4.7 [.187]	UNPL	21	0.15 [.006]	--	7-192046-8
A	[.19]	[.018]	--	12	4.5 [.157]	UNPL	18	0.15 [.006]	05189	7-192046-7
--	--	--	--	--	--	--	--	--	--	7-192046-6
A	[.45]	[.018]	--	12	9 [.354]	1-2	40	0.20 [.008]	--	7-192046-5
A	[.45]	[.018]	--	12	9 [.354]	UNPL	40	0.20 [.008]	--	7-192046-4
A	[.16]	[.018]	--	12	3 [.118]	1-2	14	0.20 [.008]	--	7-192046-3
A	[.16]	[.018]	--	12	3 [.118]	UNPL	14	0.20 [.008]	--	7-192046-2
SUPERSEDED BY 9-192046-3										
A	[.45]	[.018]	--	12	9 [.354]	UNPL	40	0.15 [.006]	--	7-192046-0
A	[.16]	[.018]	--	12	3 [.118]	1-2	14	0.15 [.006]	--	6-192046-9
A	[.16]	[.018]	--	12	3 [.118]	UNPL	14	0.15 [.006]	--	6-192046-8
A	[.45]	[.018]	--	12	9 [.354]	1-2	40	0.12 [.005]	--	6-192046-7
A	[.45]	[.018]	--	12	9 [.354]	UNPL	40	0.12 [.005]	--	6-192046-6
A	[.16]	[.018]	--	12	3 [.118]	1-2	14	0.12 [.005]	--	6-192046-5
A	[.16]	[.018]	--	12	3 [.118]	UNPL	14	0.12 [.005]	--	6-192046-4
A	[.32]	[.022]	--	12	5.7 [.225]	4-2	25	0.15 [.006]	--	6-192046-3 OBSOLETE
A	[.21]	[.022]	--	12	5.4 [.211]	1-2	19	0.12 [.005]	--	6-192046-2
SUPERSEDED BY 6-192044-0										
A	[.18]	[.022]	--	12	3.4 [.134]	UNPL	16	0.20 [.008]	--	6-192046-0 OBSOLETE
A	[.19]	[.022]	--	12	3.4 [.134]	4-2	16	0.15 [.006]	--	5-192046-9
A	[.19]	[.022]	--	12	3.4 [.134]	UNPL	16	0.15 [.006]	--	5-192046-8
A	--	[.022]	--	12	110.2 [4.340]	1-2	--	0.12 [.005]	05088	5-192046-7 OBSOLETE
A	--	[.022]	--	12	91.4 [3.600]	3-2	--	0.15 [.006]	05067	5-192046-6 OBSOLETE
A	[1.66]	[.022]	--	12	38.1 [1.500]	3-2	168	0.15 [.006]	05045	5-192046-5
A	[1.10]	[.018]	--	12	23.7 [.934]	1-2	105	0.12 [.005]	05078	5-192046-4 OBSOLETE
A	[1.10]	[.022]	--	12	22.7 [.895]	UNPL	102	0.12 [.005]	05082	5-192046-3
A	[1.20]	[.022]	--	12	20 [.788]	UNPL	89	0.12 [.005]	05129	5-192046-2
SUPERSEDED BY 5-192046-2										
									05081	5-192046-1

THIS DRAWING IS A CONTROLLED DOCUMENT.		DWN	--	Tyco Electronics Corporation Harrisburg, PA 17105-3608	
DIMENSIONS: mm		CHK	J.TURNER	08-04-93	NAME
TOLERANCES UNLESS OTHERWISE SPECIFIED:		APVD	--	PRODUCT SPEC	CONTACT BAND,FEMALE
0 PLC ± -		APPLICATION SPEC	--	SIZE	A2
1 PLC ± -		WEIGHT	--	CAGE CODE	00779
2 PLC ± 0.5 [.02]		RESTRICTED TO	--	DRAWING NO	C=192046
3 PLC ± 0.25 [.010]		CUSTOMER DRAWING	--	SCALE	1:1
4 PLC ± -		SCALE	1:1	SHEET	2 of 2
ANGLES ± -		REV	T1		
FINISH					
SEE TABLE					

192046